

MILLENNIUM SYSTEM



MILLENNIUM SYSTEM



Your single touch moves our *Intelligent Glass*...

www.tempo.com.tn

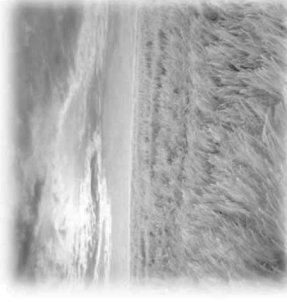
1.1. Why Millenium?

- ✓ New generational approach
- ✓ Modern aesthetic shape
- ✓ Unlimited view
- ✓ Optional choice of colors
- ✓ Environment friendly
- ✓ Various glass using option
- ✓ Various application dimensions



1.2. Millenium Features

- ✓ Ease of installation and use
- ✓ Silent running
- ✓ Adjustable glass height
- ✓ Endurance to strong winds and impacts
- ✓ With ease of cleaning and glass changing, maintenance is budget friendly
- ✓ Safety measures that prevents possible incidents
- ✓ Key button or multiple remote control options
- ✓ Heat insulated system option



1.3. Advantages of Millenium System

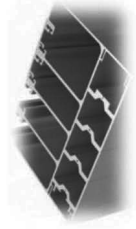
- ✓ Increases the area of usage
- ✓ Allows to control fresh air level in closed area
- ✓ Protects people against wind thanks to adjustable glass levels
- ✓ Opens and closes with minimum effort
- ✓ Fixed panel acts as glass balustrade
- ✓ Extremely secure compared with standard glass balcony systems
- ✓ Possible to control motor with USB power source when electricity goes off



1.4. Looking closer to Millenium



- ✓ Normal and *Thermal options* are fulfilling customer's needs with ultimate design and perfect combination



- ✓ When a problem occurs with the glass, without disassembling all the system, problematic parts can easily be changed thanks to modular side rails



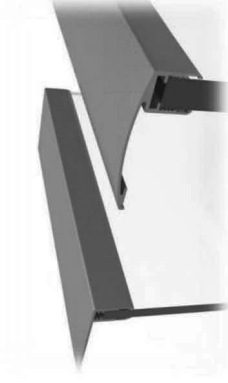
- ✓ Nail glass profiles with brush seals perfectly insulate the air and prevent air leakage and whistling sounds due to strong winds



- ✓ Thanks to balance weights which is connected with chains, provide stability and smooth run while the system works



- ✓ Inside of upper box, there is a 3,5mm-thick hot melt insulation band that provides 30-35 dB noise reduction while the system runs
- ✓ Thanks to balloon EPDM cord, hand rail part of the system perfectly touches the upper box when the system is %100 closed



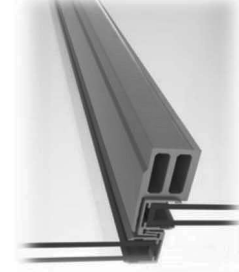
- ✓ Hand rails provide an aesthetic view to the system and besides all, it is very important in terms of safety feature. It prevents possible finger compaction
- ✓ With two different hand rail options, the system offers the user to choose the desired hand rail type flat or curved

1.4. Looking closer to Millennium

- ✓ For larger spaces exceeding the system limits or in lack of wall or post on one side, we offer box profiles between two Millenniums with 3 possible dimensions: 2X12 cm, 4X12 cm and 6X12 cm



- ✓ Fixed glass height is adjustable and it can be both equal or higher than the mobile glasses



- ✓ The additional profile holds the mobile glasses at any height.

- ✓ Thanks to this feature, at large projects, even though the heights of each module are different, all glasses can be held at the same height during stationary position



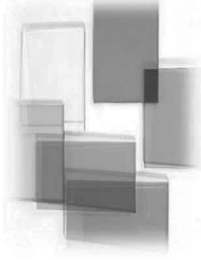
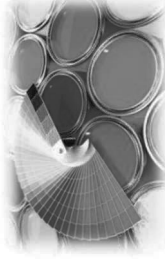
- ✓ The adjustable U profile helps you overcome the problem if your project ground is not straight up to 2,5 cm while putting wooden wedges under glass to stabilize the ground and then apply silicon fixing to finish installation

- ✓ The system offers an option of stabilising profiles which decreases the shaking of the whole system, generally used in fixed parts (but may be used in all mobile profiles as well).

- ✓ This stabilising profile is designed to match with hand rail profile which results in a perfect layout.

1.4. Looking closer to Millenium

- ✓ SOMFY is the only motor we use in our systems.
- ✓ 3 different remote control options are available as Telis 1 – 5 – 16. Over remote control, all defined systems can be controlled simultaneously or individually
- ✓ At big projects, it is possible to integrate the receiver of SOMFY to Millenium to control modules over Smartphones or Tablets. Application can be downloaded over App Store or Play Store on Apple and Android devices
- ✓ Tahoma gives freedom to end user by letting the user to create different scenarios or access the system and control it even if the user is not around the product



- ✓ It is possible to apply all kind of RAL, anodized and wood cover surfaces. RAL colors are standard. Anodized and wood cover surfaces will be calculated separately
- ✓ There are various glass color options in addition to standard 8 mm transparent tempered glass as Blue, Green, Opac, Bronze and Clear. Options will be calculated separately
- ✓ Thanks to exclusive adhesive which is specially developed for Millenium, perfect adhesion is ensured at fixing glass with aluminum profile. Adhesive is not very rigid nor soft that it is very tolerant against extreme weather conditions.

1.4.1 Possible Layouts with Millenium

At all combinations 1st glass is fixed and other are mobile as it is preceding;



Double Glass Max. Possible Sizes (5+11+5 thermal glass)

	1+1	1+2	1+3
Width	4,00	3,60	No
Height	2,40	3,60	No

Possible Combinations

Type of System	1+1	1+2	1+3
Millenium 8mm Glass	Yes	Yes	Yes
Millenium <i>Thermal</i>	Yes	Yes	No

Single Glass Max. Possible Sizes (8 mm tempered)

	1+1	1+2	1+3
Width	4,00	3,60	3,60
Height	2,40	3,60	3,60

1.5.1. Motor

Motor with integrated radio control. A classic multi-purpose unit to motorise a host of products (roller shutters, awnings, vertical blinds, etc.) Up, down and stop functions, and can be pre-programmed with "my" favourite position



Technical Data

Nominal Torque	120 Nm
Nominal Speed	12 rpm
Nominal Voltage – Frequency	220V – 50 Hz
Power Consumption	350 W
Engine Tube Diameter	60 mm
Engine Max. Load Capacity	168 kg
Weight	5,5 kg
Volume	65 Db

somfy® Building happiness

1.5.2.1. Control Units



Telis 1 RTS

The remote controls to manage 1 application or 1 group of applications.



Telis 4 RTS

The remote controls to manage from 1 up to 5 applications or 5 groups of applications.



Telis 16 RTS

The centralized remote control to manage up to 16 groups of applications. 16 channels with easy customization

1.5.2.2. Control Units (optional)

- ✓ TAHOMA is application that controls all systems which are runned by SOMFY RTS motor such blinds, roller shutters, awnings, pergolas, zip screen and Millenium using your smartphone or tablet!
- ✓ With TaHoma ® One home automation you can simplify the interaction between you and the devices in your home. It's easy to transform your home with Somfy motorisation solutions and create a simpler way of life - one that is more secure, comfortable and energy efficient, giving you total control using your favourite mobile device.
- ✓ It consists of a simple and discreet box which plugs directly into a standard wall outlet and communicates over your home's WiFi network.tablet!



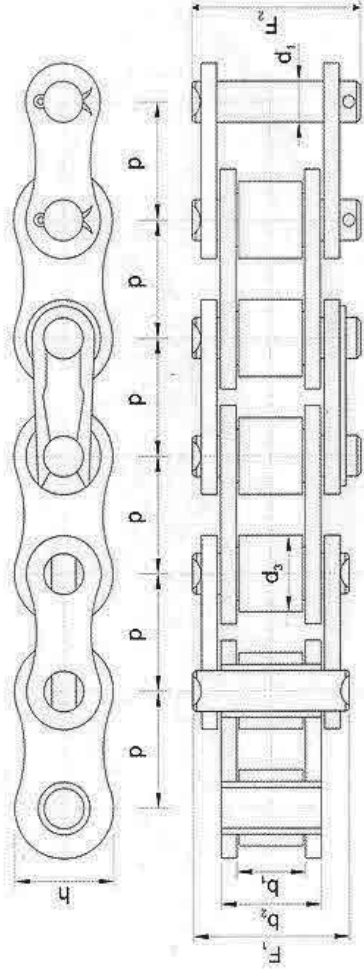
You and your home always connected

1.5.3. Power Train



- ✓ Produced proportionate to DIN 8187 norms.
- ✓ Chain: Quenched and tempered steel
- ✓ Balance weight (2 pcs X 2,5 kg)

DIN ISO Nr.	P mm	b1 mm min.	b2 mm max.	d1 mm h9	d3 mm max.	F1 mm max.	F2 mm max.	h mm max.	Zincir Çekme Kuvveti	Zincir Kopma Yüklü	Zincir Kg/m Ağırlığı
08B-1	12,7	7,75	11,3	4,45	8,51	17	20,9	11,81	0,5	18200	0,7

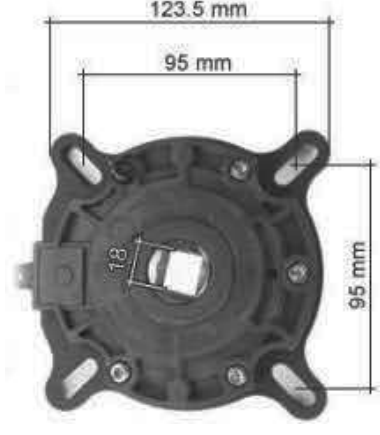


1.5.4. Safety Brake (optional)

The safety brake has a double function:

- support of the Millenium shaft
- blocking of the system in case of a component failure.

In case of release of the safety brake, a safety device cuts automatically the electric power of the motor, avoiding so supplementary damages on the system and the motorization.



1.5.5. Aluminium Profile – Glass Adhesive

- ✓ Excessively high adhesion force (75kg/cm²)
- ✓ Color sequence, resistance to air condition and UV light.
- ✓ Can be applied to almost every surface including damp-dry surfaces
- ✓ Isocyanate, solvent, halogen and acid free

Technical Data

Hardness	Ca. 55 ± 5 Shore A
Density	1,46 g/ml
Maximum allowed distortion	± 20 %
Temperature resistance	-40 °C → 90 °C
Max. tension (DIN 53504)	2,10 N/mm ²
Elasticity modulus 100% (DIN 53504)	1,80 N/mm ²
Application temperature	5 °C → 35 °C



1.5.6. Cords and Isolation

- ✓ **Bolstering:** Cord, produced of EPDM, reduces air, noise and dust-proof. It provides perfect touch with armrest part during close position of system
- ✓ **Isolation:** Cord, produced of EPDM, is resistance to air conditions and isolates air, water and noise.
- ✓ **Sound insulation:** Self-adhesive 3,5 mm thick PNB5 band reduces the voice, caused by engine in the upper box , 32 decibels according to STC norms. Perceivable noise while system running is around 35 – 40 Decibels.
- ✓ **Thermal insulation:** In addition to 5mm+11mm+5mm tempered thermal insulated glass, thermal barrier, placed in upper box and side profiles, reduces the heat transfer from outside for heat insulated system.



2. Areas of Use



- Café
- Restaurant
- Hospital
- Office
- Residence
- Garden House
- Winter Garden
- Veranda



www.tempo.com.tn